

The White Birch

The Newsletter of the Shire of Rokeclif

December XLVI (2011)

Seneschal's Missive

Take a look at our 'Next Meetings' section. We've revised the schedule because of the holidays. Everybody gets so busy this time of year that we decided to consolidate. Our Populace Meeting AND our A&S Night will be on a Sunday afternoon (December 11). People who need to cook things can come in as early as noon. (Please let Bob know if you'll be there early.) We'll gather more seriously at two, and get our meeting out of the way as quickly as possible so we can get down to some serious eating by three.

Research Night (December 7) will focus on food, so we can make our feast as period as possible, considering that we can't build a fire in Bob's building.

Everybody's invited to this potluck — including those who haven't been terribly regular in their meeting attendance, and those who are only marginally associated with the shire. Hey — we'll even invite folks from Coille Stoirmeil and Shattered Oak.

THL² Kudrun

Next Meetings

November 19-27 — Leather making (?)—to be announced via Yahoo list and facebook

December 7 — Research Night at the Library — focus on food and yule.

December 11 (Sunday) — Yule potluck and meeting at Skokke Towers. Everybody's invited.

(Check with Robert if you plan to cook on site.)

January 4 — Research Night — at the Library.

January 11 — A&S Night — "Medieval music you already know" at Cybele's (OR Fabric)

January 18 — Populace meeting

February 1 — Research Night

February 12 1 PM (?)— "Singy Thingy" — Special A&S gathering at Lady Cybele's

(to prepare for Bardic Madness) Everyone invited, including audience.

March 24 — Bardic Madness at Day's Hotel

April 11 — King Gambrinus' birthday and A&S Night

Minutes of the Populace Meeting

November 16, 2011 — Stokke Towers

Present: Cybele, Bronisláva, Robert, Kudrun, Eugene

Bronislava called us to order at 6:30. Right on [SCA] time.

OFFICER REPORTS

Equestrian — Still on hold.

A&S — Robert is concentrating on his own endeavors. When Genovefa gets a deer we'll arrange times and places to learn about leathermaking. January A&S might be at Hancock Fabric. (Bronislava is checking.)

Robert would like to step down from the office. Any volunteers?

February 12 we'll gather at Cybele's to learn some of our bardic tradition before Bardic Madness. We'll invite other groups. April will be our dancing month.

Chatelaine — Shopped at two craft stores (allergic reaction is imminent). Is talking with people at work and at Hancock about SCA — we may need more loaner garb before Bardic Madness!

BARDIC MADNESS

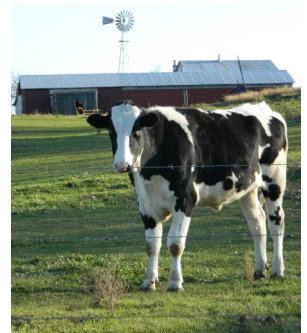
The maximum charge for the site is \$750. We set the site fee for Bardic Madness at \$10.

Under 18—\$5. Non-member surcharge will be added, of course. Feast is up to caterer, but it's between \$14 and \$19. We may talk it up with school music folks.

Bronislava will meet with Eithne (the Provost) and the Caterers. Eithne has accepted "Sing till the Cows come Home" for a theme, so we can have more cowbells.

Post-revel will be at the Hotel.

Kudrun has started a website (linked off Rokeclif.org).



A&S Tally

Bronisláva — Survived trip to two craft stores.

Cybele — Gave presentation on "Folksingers, Bards, and Storytelling" at Bluff Country Tale Spinners. Included much about SCA. Shared book about Celtic Bards. Kudrun also contributed — mentioned Bardic Madness.

Robert — Researching camp gear.

Working on scroll blanks, Japanese style

Working on bookbinding

Cooked pork roast for meeting

Kudrun — Added a bibliography of food to the Shire website.

Taught "Food—it's What's For Dinner" at A&S Night

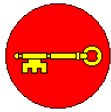
Commitments (so far) for December 11 Potluck

Bronislava—roast non-boar critter	Still desired:
Robert—roast boar	appetizers, cheese,
Kudrun—vegies	fruit (with spices)
Radegund—lentils or rice	more breads,
Cybele—muffins	salads,
Vitaliano—almond-stuffed dates	something sweet

The **Blue Heron Consort** will be performing medieval and renaissance music at 3PM, Sunday, December 18, in the Chapel of St Mary and the Angels in Winona. This group is absolutely amazing! (Ask Cyb or Kudrun)

\$13 donation requested.

Officers of the Shire



Seneschal/Chronicler – Kudrun þe Pilegrim (Karyn Schmidt)
 PO Box 147 Ettrick WI 54627 (608) 525-8400
 seneschal@rokeclif.org



Exchequer/Thrown Weapons Marshal – Charles Maewyn MacLachlin (Jerald Roeckers)
 N7295 Cty Hwy XX Holmen, WI 54636 (608) 797-4093
 exchequer@rokeclif.org



A&S Minister – Robert the Unlucky (Bob Haavind) for the time being...
 421 South Sixth St., LaCrosse, WI 54601
 bluetooth65@gmail.com



Web Minister/ Youth Minister/ Knight Marshal
 Now seeking qualified applicants



Chatelaine/Minister of Random Hugs – Bronislavá (Kirsta Skaff)
 702 Losey Blvd. South. LaCrosse WI 54601 (608) 785-3107
 zvpeyronne@yahoo.com



Chirurgion — Gavin MagAonghusa (Kevin Meyers)
 2168 Denton St. LaCrosse WI 54601 (608) 797-1919



Herald —Amata Cromwell (Amy Schleeter)
 Unofficial until her membership is renewed.

Upcoming Events

December 3	Boar's Head — CAM (West Bend WI)
January 7	Winter Knights — Blachemere (Ramsey MN)
January 28	It's only a flesh wound — Jararvellir (Jefferson WI)
February 4	Early Period Symposium — Blachemere (Coon Rapids MN)
February 18	Lupercalia — Rivenwood Tower (Nicollet MN)
February 25	Fighter School — Windhaven (Kewaunee WI)
March 3	Fighting in the shade — Jararvellir (Madison WI)
March 16	That Moot Thingy — Coille Stoirmeil (Wilton WI)
March 24	Bardic Madness — Rokeclif
March 31	Haire Affaire — Falcons Keep (Wausau WI)

This list is far from complete. It's mostly events nearby, or of particular importance. Consult www.Northshield.org for a complete event schedule.

DISCLAIMER

The White Birch is a publication of the Shire of Rokeclif of the Society for Creative Anachronism, Inc. It is not a corporate publication of the Society for Creative Anachronism, Inc., and does not delineate SCA policies. What else can you expect?

SUBSCRIPTION INFORMATION

The White Birch is published monthly. It is available in paper form for a suggested donation of \$12 a year. You may mail a check made out to "SCA Wisconsin – Shire of Rokeclif" to Karyn Schmidt, PO Box 147, Ettrick WI 54627.